

# Wig Lending Library: Wig Descriptions

Every wig in the Wig Lending Library (WLL) has been generously donated for the purpose of helping future wig owners find what kind of wig best suits them.

This is an updated list of our current library of wigs. Some wigs may be on loan and unavailable at a certain time. Please scroll to the bottom to find our selection for children's wigs.

Each wig below includes photos and a description that follows the format:

- a) Hair type and manufacturer,
- b) Cap construction,
- c) Hair colour and length,
- d) Any other notes about the wig.

Questions? Email us at [info@canaaf.org](mailto:info@canaaf.org).

*Updated October 11, 2023*

## Table of Contents

Adult Wigs.....	3
Wig 001: Diamond .....	3
Wig 004: Sylvie.....	4
Wig 005: Luna .....	5
Wig 006: Ginny.....	6
Wig 012: Kailee .....	7
Wig 026: Alicia.....	8
Wig 027: Mikasa.....	9
Wig 031: Kathy.....	10
Wig 036: Krista .....	11
Wig 038: Roslyn.....	12
Wig 039: Natalie.....	13
Wig 040: Ida .....	14
Wig 042: Valerie.....	15
Wig 043: Heather .....	16
Wig 044: Karen.....	17
Wig 045: Crystal .....	18
Wig 046: Eve .....	19
Wig 047: Evelyn.....	20
Wig 048: Christie.....	21
Wig 049: Darcy.....	22
Wig 050: Lee.....	23
Children’s Wigs .....	24
Wig 002: Luella.....	24

## Adult Wigs

### Wig 001: Diamond

- a) Synthetic hair, from Truly You in Mississauga.
- b) Open wefts, closed front.
- c) Shoulder length, brown/copper tone, bob.
- d) N/A



Wig 004: Sylvie

- a) Synthetic hair, unknown manufacturer.
- b) Open wefts, closed front, wig combs.
- c) Long, dark brown.
- d) N/A



Wig 005: Luna

- a) Synthetic hair, Jon Renau, style "Heidi"
- b) Open wefts, lace front.
- c) Medium length, blonde colour "12FS8", wavy and has been slightly trimmed.
- d) N/A



Wig 006: Ginny

- a) Synthetic hair, Tony of Beverly, style "Britt".
- b) Open wefts, closed front.
- c) Colour "6/28", medium brown with gold highlights, medium length, bangs.
- d) Hair fraying at the ends



Wig 012: Kailee

- a) Synthetic hair, unknown manufacturer.
- b) Open wefts, wefted front.
- c) Dark brown (colour #4). Medium length.
- d) N/A



Wig 026: Alicia

- a) Synthetic hair, Second Scalp brand.
- b) Open wefts, lace front.
- c) Dark brown/black, long, wavy
- d) N/A





Wig 027: Mikasa

- a) Synthetic hair (can't make out the brand on the tag), but its heat friendly synthetic
- b) Wefted cap with breathable construction, also has Velcro adjustable straps
- c) Shoulder length, brown/copper tone
- d) N/A



Wig 031: Kathy

- a) Synthetic hair, First Lady Expressions Line: Flirty in colour H29S
- b) Open weft, closed front
- c) Soft, short blonde, straight hair
- d) N/A



Wig 036: Krista

- a) Synthetic hair
- b) Breathable cap, Approx. 13x5 closure
- c) Brown hair colour, above shoulder length
- d) Stitched in certain places to ensure snug fit. Very soft hair.



Wig 038: Roslyn

- a) Synthetic hair wig, Raquel Welch Line.
- b) Lightweight breathable cap with adjustable straps for easy application.
- c) Dark brown with lighter brown, medium length.
- d) Heat Friendly.



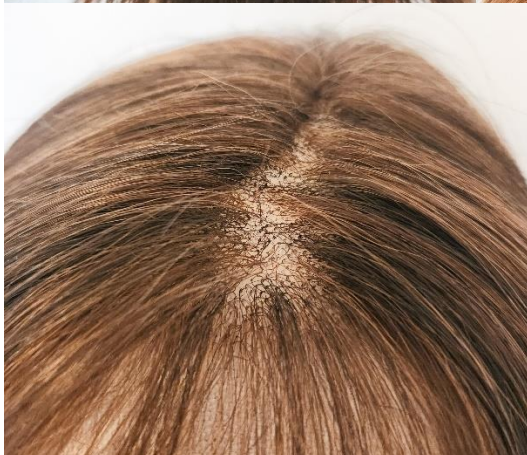
Wig 039: Natalie

- a) Synthetic hair wig, Raquel Welch unit.
- b) Lightweight breathable cap with adjustable straps for easy application.
- c) Brown with blonde, light brown highlights. Medium length.
- d) Heat friendly.



Wig 040: Ida

- a) Synthetic hair wig, Gabor brand.
- b) 100% Modacrylic, mesh breathable cap.
- c) Brown with soft light brown highlights. Short length.
- d) N/A



Wig 042: Valerie

- a) Human hair
- b) Silicone & mesh base
- c) Medium brown, mid-length
- d) N/A



Wig 043: Heather

- a) Human hair
- b) Silicone & mesh base
- c) Medium brown, mid-length
- d) N/A





Wig 044: Karen

- a) Human hair
- b) Silicone & mesh base
- c) Medium brown, long
- d) N/A



Wig 045: Crystal

- a) Human hair
- b) Silicone & mesh base
- c) Light brown with bangs, mid-length
- d) N/A



Wig 046: Eve

- a) Synthetic hair
- b) Open wefts
- c) Medium brown, shoulder length with bangs
- d) Heat resistant fiber up to 180 Celsius with styling tools



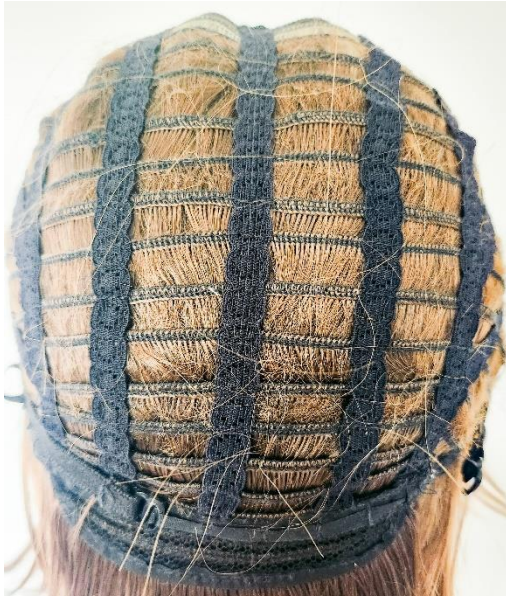
Wig 047: Evelyn

- a) Synthetic hair
- b) Medium/light density, average size cap, open wefts
- c) Medium brown, shoulder length
- d) Heat resistant fiber up to 180 Celsius with styling tools



Wig 048: Christie

- a) Synthetic hair
- b) Large cap, open wefts
- c) Brown with blonde highlights, short
- d) Heat resistant fiber up to 180 Celsius with styling tools



Wig 049: Darcy

- a) Synthetic hair
- b) Open wefts
- c) Brown with blonde roots, short
- d) N/A



Wig 050: Lee

- a) Synthetic hair
- b) Topper clip in
- c) Colour: midnight cocoa, length: medium (12 inches)
- d) Heat defiant hair up to 350 degrees



## Children's Wigs

### Wig 002: Luella

- a) Human hair, from Rochetti Wigs.
- b) Handmade, closed full lace cap, closed front.
- c) Below shoulder length, blonde, wavy.
- d) Size better suited for smaller head or youth/child.

